

Product Advisory

PROFIBUS Generation 2 Firmware Issue

	<input checked="" type="checkbox"/> Product Advisory
Document ID	PA-15-12330
Edition	2015.09.14.0
Date	14-Sep-2015
Author	Eric GORY
Title	Industrial Communication, Product Marketing, France
Owned/Approved By	Syed ALI
Title	Industrial Communication Quality Manager
Approved By	Damien Leterrier
Title	Director, Industrial Communications

Restriction of Use, Duplication or Disclosure of Proprietary Information

©2015 Molex Inc. All rights reserved.

This document and its contents are the proprietary and confidential property of Molex Inc. and/or its related companies and may not be used or disclosed to others without the express prior written consent of Molex Inc. and/or its related companies.

BradCommunications, applicom, Direct-Link and SST are trademarks of Molex Incorporated. All other trademarks belong to their respective companies.

Hardcopies are not controlled.

CHANGE RECORD

Edition	Date	Author	Pages/Sections Affected	Description
1.0.0.0	10-Sep-2015	Eric GORY	All	Initial draft.
1.1.0.0	24-Sep-2015	Samuel Savary	All	Product version affected / fixed added

PRODUCT ADVISORY

PROFIBUS Generation 2 Firmware Issue

Affected Product:	PROFIBUS DR2-DPM-PCU (112011-5033) DR2-DPM-PCU-B25 (112011-5034) DR2-DPM-PCIE (112011-5035) DR2-DPM-CPU (112018-5005) ST2-DPM-PCU (112011-5031) ST2-DPM-PCIE (112011-5032)
Product Version affected :	PV: 1.0.0.0 (Firmware 1.0.17.0) and 1.0.1.0 (Firmware 1.0.20.0) only.
Product Version fixed :	PV: 1.0.2.0 (Firmware 1.0.21.0)
Product Description:	applicomIO PROFIBUS DP Network Interface Cards
Product Manager:	Eric Gory
Phone:	+33 (0)2 32 96 04 39
Issue Date:	September 14th, 2015
Subject:	Random values set to Outputs process data at card initialization

Customer Approval of Change: **Applicable** **Not Applicable**

Overview

This Product Advisory is to notify that a bug has been identified and resolved with the applicomIO PROFIBUS DP (Generation 2) network interface cards.

Symptoms

After the card's initialization (volatile or in flash configuration), random values are set to the outputs process data from byte offset 256.

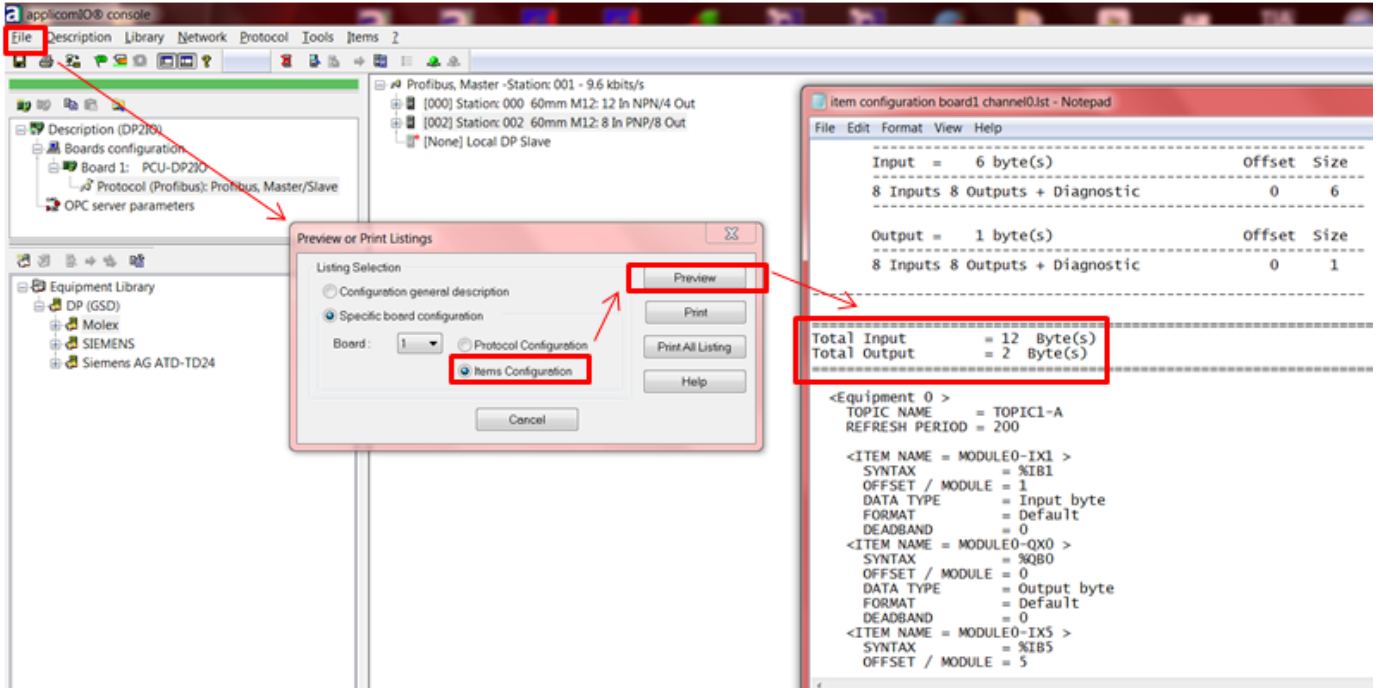
As those values are sent to the slave device(s) once PROFIBUS data exchange starts, it may induce unexpected behavior and/or major damages.

How to check your Output data size:

Open the applicomIO Console, select *File > List and Print* and then select *Items Configuration* and then click on *Preview*. See picture below

If total output data size is lower than 256 bytes, you are not affected by the issue.

If total output data size is upper than 256 bytes, your must upgrade your card with **firmware 1.0.21.0 version**.



Resolution

How to upgrade the card with firmware version v1.0.21.0?

1. Go to our Support Web pages www.molex.com/link/brad_support.html
2. Select *Download Center*
3. In Option 1 area, choose one of **DR2-DPM-xxx** part numbers and click *Go!*

Brad® Automation Product - Download Center

1. Select which categories you wish to include in your search:

- Software / Drivers (Product CD, installation software, firmware files, Utilities, EDS/GSD Files...)
- User's manuals (Software/hardware/Firmware/DLL reference guides)
- Technical Notes (Application & release notes, Product Advisories, What's news...)
- Demonstration (Trial version, video...)

2. Operating System?

Windows Linux Vxworks Rtx

3. Legacy Product (discontinued product)?

No Yes

Option 1 - Select the Product Lines and/or Search by Part Number

- Brad® PC Network Interface Cards (NIC)
- Brad® PAC/PLC Communication Modules
- Brad® Remote Communication Modules
- Brad® Network Diagnostics Tools
- Brad® Harsh-Duty IO Modules
- Brad® Simulation Tools
- Brad® Ethernet Switches

DR2-DPM-PCU

Go!

And then look for the DP2-DPM Firmware 1.0.21.0 and click on *Download*.

Search Results

[Search Again](#)

Total Results: 4
Page: 1 of 1

1. Found in Catalogue: Software
DR2-DPM Firmware Module - 1.0.21.0
[Download - \[2880000 B\]](#) - 14/09/15
Applicable Products: DR2-DPM-CPCU / DR2-DPM-PCIE / DR2-DPM-PCU
Applicable Networks: Profibus
Item Description: Profibus DR2-DPM Firmware Module and the updating procedure.

The firmware package includes the firmware itself and the instructions to update your network interface card.

Molex Inc. maintains its commitment to customer support excellence, including existing and new products, across the broadest line of industrial communication products available in the marketplace. If you have any questions, please contact Technical Support at one of the numbers listed below.

Contact Details

Molex Inc. maintains its commitment to customer support excellence, including existing and new products, across the broadest line of industrial communication products available in the marketplace. If you have any questions, please contact Technical Support at one of the numbers listed below.

North America

Canada:
Tel: 1-519-725-5136
Fax: 1-519-725-1515
Support : ic.support.na@molex.com
Sales : customer.service@molex.com

Europe

France:
Tel: 33-(0)2-32-96-04-22
Fax: 33-(0)2-32-96-04-21
Support: ic.support.eu@molex.com
Sales : WoodheadIC.Info@molex.com

Asia-Pacific

China:
Tel: +86-21-5835-9885
Fax: +86-21-5835-9980
Sales & Support email:
WoodheadSupportAP@molex.com

Japan:

Tel: +81-46-265-2428
Fax : +81-46-265-2429
For I/O module:
Sales & Tech e-mail:
CON_MXJ@molex.co.jp
For IC products (NIC & SDK)
Sales & Tech e-mail:
SDK_MXJ@molex.co.jp